



SUNCOMBE
CIP & PROCESS ENGINEERS

ImmersionWasher™



Gillain & Co
HYGIENIC EQUIPMENT FOR FOOD & LIFE SCIENCES

About Us

Suncombe Ltd supply Cleaning and hygienic processing technology for the Bio-Pharma, Medical, Food and other critical hygiene industries. From CIP to PartsWashers, we are uniquely capable of offering you a complete washing and processing solution.

Formed in 1961, we have a tremendous amount of experience in-house and provide a high level of technical and engineering expertise. Our completed projects range from stand-alone systems to complete processing solutions. Our products are built to a high quality and encompass all relevant legislation, guidelines, testing, documentation, quality assurance and traceability requirements.

ImmersionWasher™ Introduction

Employing a combination of immersion, turbulence, recirculation and spray cleaning, the ImmersionWasher™ range of Parts Washers are top loading washer/disinfectors, which provide a cleaning solution for hoses and parts. Direct connections within the washers can be used for hoses and standard and bespoke baskets can be used for parts cleaning. They provide an environmentally friendly, low water and energy usage washing facility for washing.

Lean Technology

Adopting LEAN principles, all Suncombe products are developed to ensure they minimise utilities and time, whilst ensuring the safety of the operators and the efficiency of the cleaning. Utilising innovative fluid handling techniques, they incorporate a combination of traditional and new technologies to provide an environmentally friendly, low water and energy usage washing facility that is safe and ergonomic for the operators.



Typical Recipe Configuration

A typical ImmersionWasher™ includes 100 recipes, each which can be built up of a combination of the following:

- *Immersion Step*
- *Turbulation Step*
- *Recirculation Step*
- *Spray Cleaning Step*
- *Drying Step*
- *Cooling Step*
- *Drain Step*

Washing Chamber

316 Stainless steel radius-corners, sloping design and smooth, crevice-free with an optional certified surface finish. The chamber is constructed with innovative mechanisms for turbulence, recirculation and spray cleaning providing a robust, reliable washing facility that provides a high level of efficiency. Availability of drying systems to dry the components following washing. Optionally “Air Bubbling” washing can be used.

Detergent Dosing

One to four liquid dosing systems, which can be incorporated within any recipe step at any concentration, complete with dosing safeguards including low detergent confirmation and detergent dosed volume confirmation, as well as

Door

Fold down single piece or multi-piece lids, fitted with an optional observation window and interior light, provide a seal with integral vents for vapour removal. .

Printer

Providing a real time record of the washer operation, the panel printer prints out a comprehensive record of the clean including the critical process parameters, providing a positive sign off area on completion.

Automation

Suncombe offers four different control packages, CIPSuite1™ to CIPSuite4™, they all incorporate the optimum control for operation, providing a simple to use interface which incorporates advanced facilities.

Validation / Documentation

User documentation is included with an option to follow the validation lifecycle approach (DQ, FAT, SAT, IQ & OQ) where validation is key to every stage of the development process, including Factory Acceptance Testing (FAT), SAT and Qualification.

Loading Accessories

Standard and Bespoke racks, carriers, injectors and baskets. Using a modular approach gives total flexibility allowing multiple use and thereby reducing the need for multiple accessories, saving costs and space. 3D modelling and riboflavin testing to guarantee full coverage.

Key Features

- Cleaning recipe can be developed to include any combination of immersion, turbulation, recirculation and spray cleaning to provide optimum cleaning power
- Fully Automatic Control
- Safety Interlocks and Controls
- 316L Stainless steel wetted parts including radius-cornered chamber, distribution pipework and racks.
- Sloping design and smooth, crevice-free construction
- EPDM, PTFE FDA-approved elastomers and tri-clamp connections
- 316/304 stainless steel non-wetted parts
- BioPharma Diaphragm or butterfly valves
- Polished and certified surface finishes to 0.4 ra and optionally electropolished
- Large hygienic variable speed washing pump
- An extensive range of standard range of washer-dryer racks are available for common applications.
- One to four liquid dosing systems including dosing confirmation
- Fully adjustable cycle parameters including temperatures up to 90°C, pressures and times
- Available with Conductivity controllers for detergent concentration and pure water.
- CIPSuite™ Control Systems with a colour graphic operator interface for visualisation
- Password control
- Up to 100 Fully configurable recipes
- In built troubleshooting and diagnostic ability
- Optional integrated HEPA drying system, variable drying temperature control up to 120°C, providing fast and efficient drying

Support

The Suncombe Technical Support and Customer Care departments' obligation is to provide total customer support. This support starts at the proposal stage, continues throughout the contract and thereafter. A personal customer care agent will be assigned to you at quotation stage and will support you throughout. The department currently supports all of our clients over the last 50 years. Support includes advise and surveys, installation and commissioning, User training, call-out repairs and service contracts for preventative maintenance.

Cleaning Technologies

A typical ImmersionWasher™ includes 100 recipes, each which can be built up of a combination of the different cleaning technologies, detailed below.

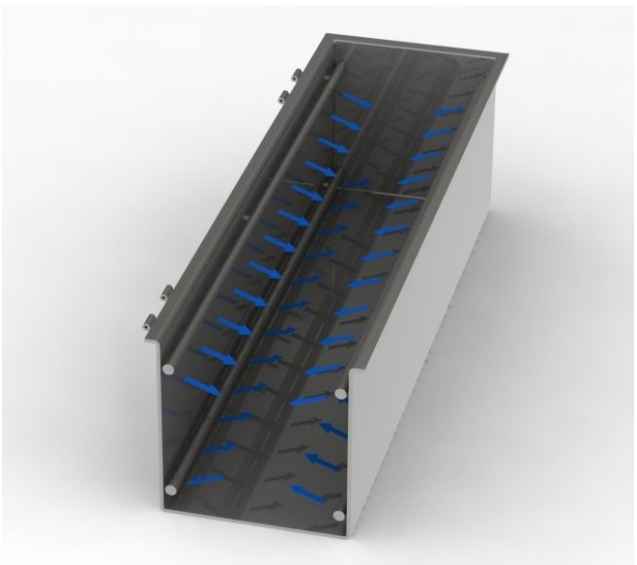
Immersion, Turbulation & Recirculation Cleaning

Immersion cleaning loosens soilage to prepare it for other cleaning methods. Turbulation and recirculation cleaning provide targeted low and high velocity jet action within the immersed fluid.



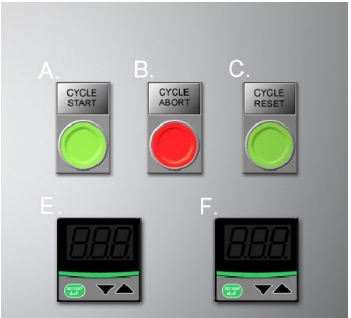
Spray Cleaning

A highly effective, low energy method of applying a targeted liquid spray onto parts surfaces.



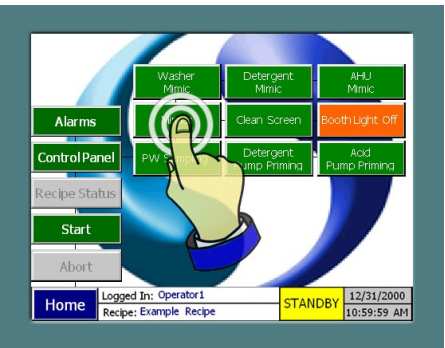
Automation

CIPSuite#1™ - Simple versatile automatic control system with 6 time changeable recipes.

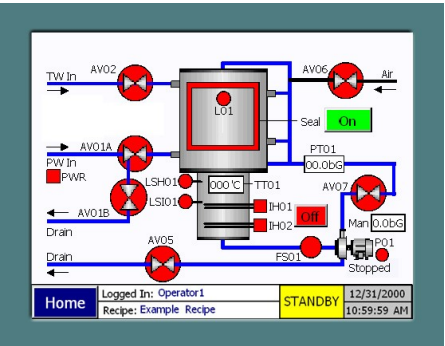


CIPSuite#2™ - Automatic control system with 100 fully configurable recipes, time changeable recipes, I/O faceplates, Mimic diagrams, Printer, Profibus Communications Protocol, Repeatable automatic cycles, User control with passwords, In built troubleshooting and diagnostic ability.

Control Panel



Mimic



Recipe Setup

