



SUNCOMBE
CIP & PROCESS ENGINEERS



Gillain & Co
HYGIENIC EQUIPMENT FOR FOOD & LIFE SCIENCES

PharmaVessels™



About Us

Suncombe Limited is an organization dedicated to the advancement of Clean in Place (CIP) and Hygienic processing technology. We have always targeted leading-edge technologies. Our mission is to utilise forward-thinking expertise that anticipate and satisfy the needs of cleaning and hygienic processing requirements of the future.

Introduction

Suncombe designs and manufactures high quality, economically priced tanks, vessels, mixers and processors from 10 litre to 60,000 litre capacity. We have been supplying these for over 40 years, where they have established a reputation for high quality and longevity. The **Pressure Vessels** can be specifically designed and manufactured for your particular requirement.

Equipment Standards

Process standard (180 grit) or Purified Water Handling standard (0.4 mmRa surface finishes). 0.1 mmRa and electropolished finishes available.

Full Validation Package

FDS, Autocad Drawings, Materials of construction certificates (3.1b's), Weld Procedures, Welder Approval Certificates, Isometric Weld Log Drawings, engraved weld ID's, FAT, IQ and OQ Protocols. Data Dossier.

Typical uses

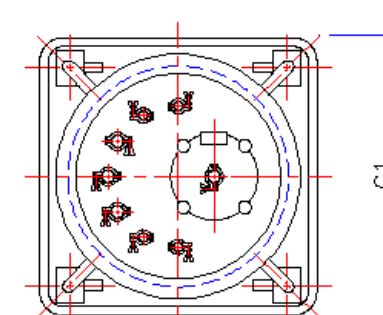
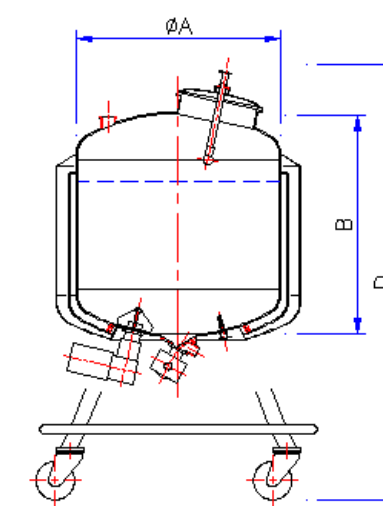
Used in Biotech, Pharmaceutical, Diagnostics, Blood Products, Healthcare, and other critical processing industries for:

- » Fermenters, Mix Tanks, Retorts and Base Tanks
- » Batch Processors, Pasteurizers and Holding Tanks
- » Balance Tanks, CIP Tanks, Sterile Solution Tanks
- » Media Processors, Harvest Tanks and Reactors
- » Storage, Bio Reactors and Solution Preparation
- » Hold Tanks, Transfer Tanks, Pilot Plant Tanks

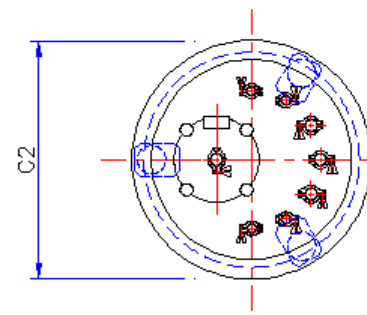
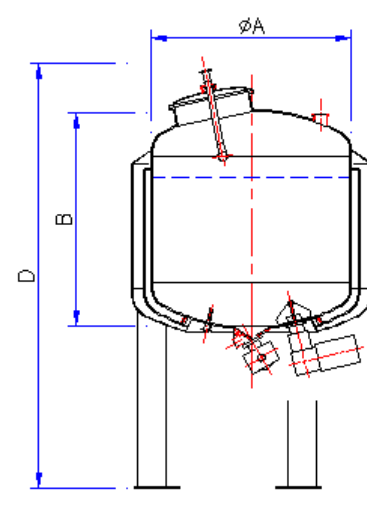


DIMENSIONS

MOBILE



FIXED



LITRES	A	B	C1	C2	D	MOBILE	STATIC
10	φ412	300	600	560	1100	✓	✓
20	φ412	375	600	560	1100	✓	✓
30	φ412	450	600	560	1100	✓	✓
40	φ412	525	600	560	1150	✓	✓
50	φ450	600	700	600	1200	✓	✓
60	φ450	650	700	600	1250	✓	✓
100	φ550	700	800	700	1350	✓	✓
150	φ600	800	850	750	1450	✓	✓
250	φ800	850	1100	950	1700	✓	✓
300	φ800	1000	1100	950	1800	✓	✓
500	φ1000	1075	1250	1150	1850	✓	✓
600	φ1000	1250	1250	1150	2000	✓	✓
750	φ1000	1450	X	1150	2200	X	✓
1000	φ1100	1500	X	1250	2250	X	✓
1500	φ1250	1650	X	1400	2400	X	✓
2000	φ1400	1875	X	1550	2550	X	✓
3000	φ1550	2200	X	1700	2850	X	✓

- » Culture Vessels, Blend Vessels, Cryogenic Vessels
- » Kill Tanks, WFI / USP Water Loop Break Tanks
- » Inoculation Vessels, Parenteral Vessels

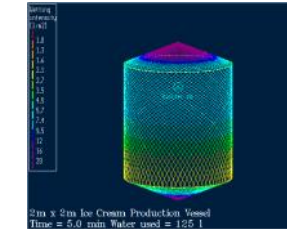
Standard or Bespoke

The most common vessels are offered as a standard range. They are pressure or

atmospheric vessels with a selection of equipment. We also offer bespoke manufactured vessels which can be built to your design with your choice of equipment.

Cleanability

Suncombe **Pressure Vessels** are supplied with a computer generated simulation of the cleaning pattern for the internals of the vessel. This graphic gives confirmation of the cleanability of the vessels and can be used for validation purposes. Together with standard ribo-flavin tests at Factory Acceptance Testing.



Spray Pattern Graphic

Complimentary Cleaning Systems

Suncombe manufacture a range of Cleaning systems that are designed to clean these vessels.

Integrated Systems

Pressure Vessels can be integrated into a complete process system including process evaluation, P&ID development, Plant layout, Detail design, equipment construction, procurement of ancillaries, Installation/commissioning, documentation and validation and training.

Standard Features

- 20 to 2000 litre vessels
- Pressure/Vacuum Design or Atmospheric design
- 316L Stainless Steel Construction
- Internal Surface Finish £ 0.4 mmRa
- Stainless Steel polished Framework
- Drainable, crevice free design
- Data Dossier
- Bottom triclamp Outlet, two top triclamp inlets
- Single 3" triclamp top CIP spray device inlet