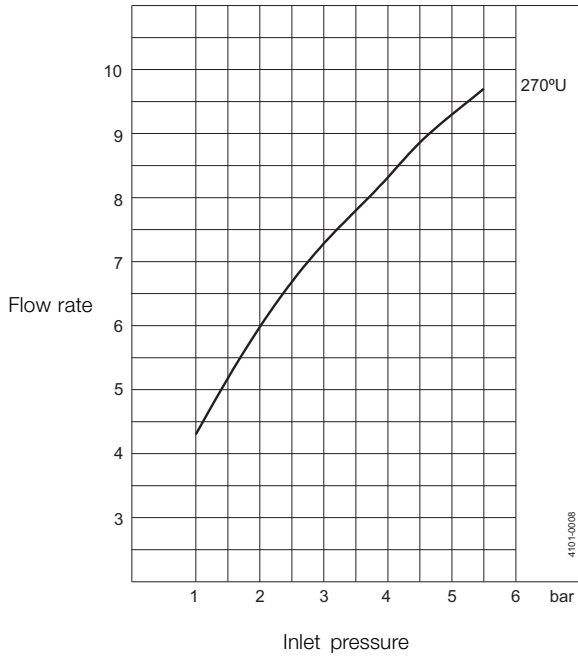
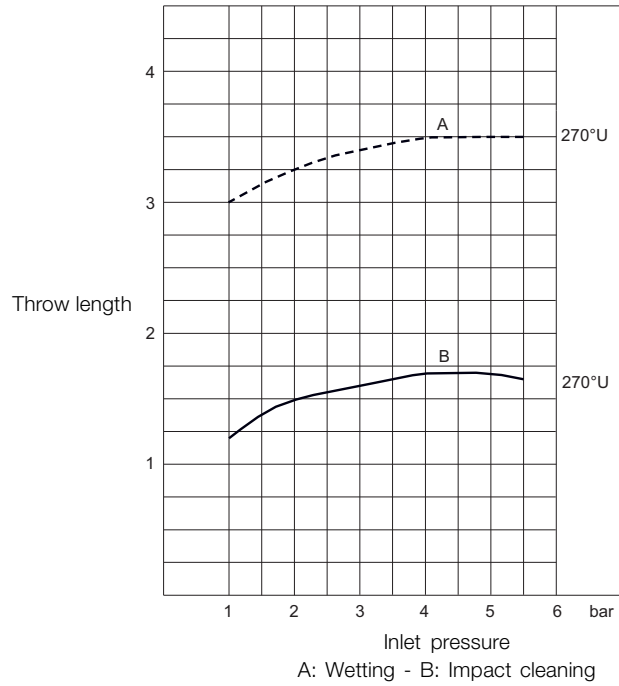


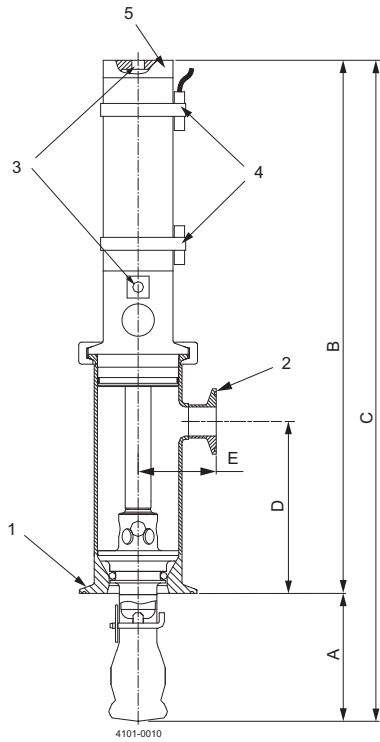
Flow Rate
m³/h



Cleaning Radius
m



Dimensions (mm)



Pneumatic version

Dimensions (mm)

Stroke	A	B	C	D	E	Weight
100	100	410	510	133	58.5	5.0 kg
150	150	510	660	183	58.5	5.5 kg
250	250	710	960	283	58.5	6.4 kg

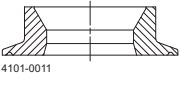
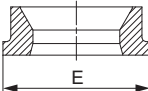
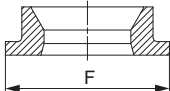
Connections

1. Tank connections
2. Cleaning media
1" Clamp ISO 2852
3. Air supply - pneumatic driven only
ISO 228-G 1/8
4. Option
Magnetic sensor
5. Adjustable valve - media driven only

Media driven

Dimensions (mm)

Stroke	A	B	C	D	E	F	Weight
100	100	491	591	133	ø76.1	ø85	5.6 kg
150	150	621	771	183	ø76.1	ø85	6.3 kg
250	250	869	1119	283	ø76.1	ø85	7.4 kg

Tank Connection		
Clamp	Welded	Welded
		
3" Clamp ISO 2852	3" ISO 2037/US	DN80 DIN 11.850

Options

- A. Hastelloy C22 in product contact part
- B. Alternative sealing component material, FPM*, FFKM*
- C. Positioning sensors, which generate digital signals at the fully retracted or fully extended positions
- D. 3.1. certificate for metallic parts available upon request

* FDA compliance 21CFR§177

Alfa Laval reserves the right to change specifications without prior notification. ALFA LAVAL is a trademark registered and owned by Alfa Laval Corporate AB.

ESE00334EN 1201

© Alfa Laval

How to contact Alfa Laval

Contact details for all countries are continually updated on our website. Please visit www.alfalaval.com to access the information direct.