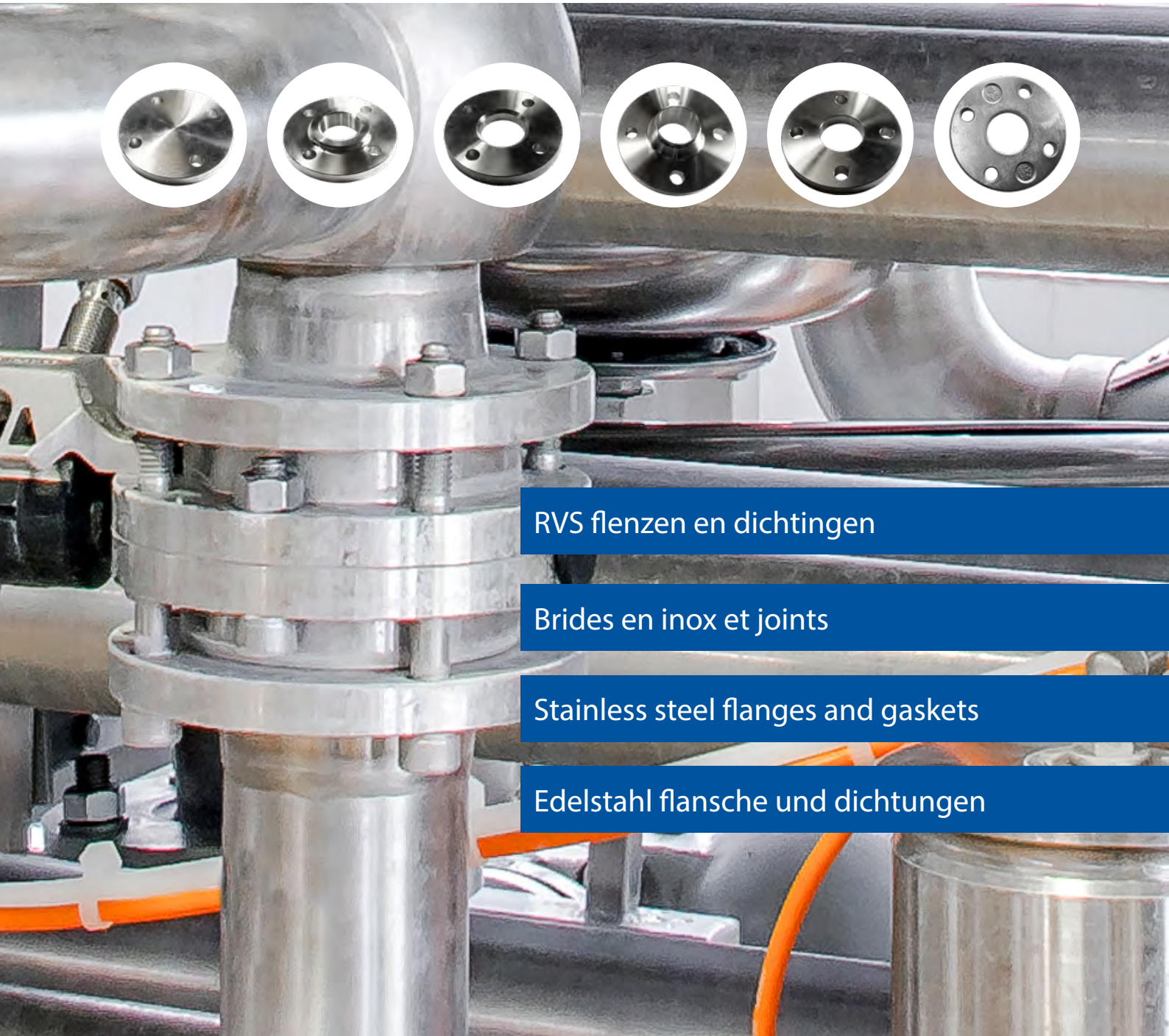




Gillain & Co
HYGIENIC EQUIPMENT FOR FOOD & LIFE SCIENCES

part of
heleon
group



RVS flenzen en dichtingen

Brides en inox et joints

Stainless steel flanges and gaskets

Edelstahl flansche und dichtungen

inoxco



inoxco

- INOXCO staat voor RVS-componenten van de hoogste kwaliteit.

INOXCO est synonyme de composants en acier inoxydable de la plus haute qualité.

INOXCO stands for the highest quality stainless steel components.

INOXCO PURE steht für Edelstahlkomponenten höchster Qualität.

- INOXCO flenzen zijn direct leverbaar uit voorraad.
Les brides INOXCO sont disponible directement de stock.
INOXCO flanges are available from stock.
INOXCO flansche sind direkt ab Lager lieferbar.



RVS flenzen en dichtingen

Brides en inox et joints

Stainless steel flanges and gaskets

Edelstahl flansche und dichtungen

Blindflens EN 1092-1 Type 05A Bride pleine EN 1092-1 Type 05A Blind flange EN 1092-1 Type 05A Blindflansch EN 1092-1 Type 05A	4
Draadflens EN 1092-1 Type 13B Bride taraudé EN 1092-1 Type 13B Threaded Flange EN 1092-1 Type 13B Gewindeflansch EN 1092-1 Type 13B	5
Losse Flens EN 1092-1 Type 02A Bride folle EN 1092-1 Type 02A Loose flange EN 1092-1 Type 02A Loser Flansch EN 1092-1 Type 02A	6
Voorlasflens EN 1092-1 Type 11B Bride à talon EN 1092-1 Type 11B Welding neck flange EN 1092-1 Type 11B Vorschweißflansch EN 1092-1 Type 11B	7
Vlakke Lasflens EN 1092-1 Type 01A Bride plat à souder EN 1092-1 Type 01A Slip-on flange EN 1092-1 Type 01A Flansch glatt zum schweissen EN 1092-1 Type 01A	8
Losse overschuifflens DIN 2642 F ND 10 Aluminium Bride folle DIN 2642 F ND 10 Aluminium Lap-joint flange DIN 2642 F ND 10 Aluminium Lose flansch DIN 2642 F ND 10 Aluminium	10
Dichting voor flens Joint pour bride Gasket for flange Dichtung für flansch	11

Meer info / offerte?

Plus d'info / devis ?

More info / price quotation?

Mehr info / Preisangebot?

T: + 32 (0)3 870 60 80

E: advice@gillain.com





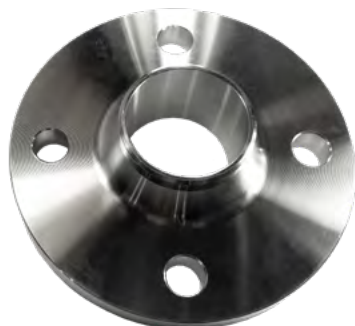
AFMETING DIMENSION DIMENSION ABMESSUNG	304L	316L
DN10 PN40	ZEEN05A1C	ZEEN05A4C
DN15 PN40	ZEEN05A1D	ZEEN05A4D
DN20 PN40	ZEEN05A1E	ZEEN05A4E
DN25 PN40	ZEEN05A1F	ZEEN05A4F
DN32 PN40	ZEEN05A1G	ZEEN05A4G
DN40 PN40	ZEEN05A1H	ZEEN05A4H
DN50 PN40	ZEEN05A1I	ZEEN05A4I
DN50 PN16	ZCEN05A1I	ZCEN05A4I
DN65 PN16 (4 gaten/4 trous/4 holes/4 Schraubenlöcher)	ZCEN05A1J-4	ZCEN05A4J-4
DN65 PN16 (8 gaten/8 trous/8 holes/8 Schraubenlöcher)	ZCEN05A1J	ZCEN05A4J
DN65 PN40	ZEEN05A1J	ZEEN05A4J
DN80 PN16	ZCEN05A1K	ZCEN05A4K
DN80 PN40	ZEEN05A1K	ZEEN05A4K
DN100 PN16	ZCEN05A1L	ZCEN05A4L
DN100 PN40	ZEEN05A1L	ZEEN05A4L
DN125 PN16	ZCEN05A1M	ZCEN05A4M
DN150 PN16	ZCEN05A1N	ZCEN05A4N
DN200 PN10 (8 gaten/8 trous/8 holes/8 Schraubenlöcher)	ZBEN05A1P	ZBEN05A4P
DN200 PN16 (12 gaten/12 trous/12 holes/12 Schraubenlöcher)	ZCEN05A1P	ZCEN05A4P
DN250 PN16	ZCEN05A1Q	ZCEN05A4Q
DN300 PN10 (12 gaten/12 trous/12 holes/12 Schraubenlöcher)	ZBEN05A1R	ZBEN05A4R
DN400 PN16	ZCEN05A1T1	ZCEN05A4T1



AFMETING DIMENSION DIMENSION ABMESSUNG	304L	316L
DN10 -3/8" BSP PN40	ZEEN13B1C1	ZEEN13B4C1
DN15 -1/2" BSP PN40	ZEEN13B1D1	ZEEN13B4D1
DN20 -3/4" BSP PN40	ZEEN13B1E1	ZEEN13B4E1
DN25 -1" BSP PN40	ZEEN13B1F1	ZEEN13B4F1
DN32 -1 1/4" BSP PN40	ZEEN13B1G1	ZEEN13B4G1
DN40 -1 1/2" BSP PN40	ZEEN13B1H1	ZEEN13B4H1
DN50 -2" BSP PN40	ZEEN13B1I1	ZEEN13B4I1
DN50 -2" BSP PN16	ZCEN13B1I1	ZCEN13B4I1
DN65 -2 1/2" BSP (4 gaten/4 trous/4 holes/4 Schraubenlöcher) PN16	ZCEN13B1J1-4	ZCEN13B4J1-4
DN65 -2 1/2" BSP (8 gaten/8 trous/8 holes/8 Schraubenlöcher) PN16	ZCEN13B1J1	ZCEN13B4J1
DN80 -3" BSP PN16	ZCEN13B1K1	ZCEN13B4K1
DN100- 4" BSP PN16	ZCEN13B1L1	ZCEN13B4L1



AFMETING DIMENSION DIMENSION ABMESSUNG	304L	316L
DN10/ 17,20 PN40	ZEEN02A1C1	ZEEN02A4C1
DN10/ 12,00 -14,00 Special Bore 19,00 PN40	ZEEN02A1C2	ZEEN02A4C2
DN15/ 18,00 - 20,00 Special Bore 24,00 PN40	ZEEN02A1D2	ZEEN02A4D2
DN15/21,30 PN40	ZEEN02A1D1	ZEEN02A4D1
DN20/ 22,00 - 25,00 Special Bore 30,00 PN40	ZEEN02A1E2	ZEEN02A4E2
DN20/ 26,90 PN40	ZEEN02A1E1	ZEEN02A4E1
DN25/ 28,00 - 30,00 Special Bore 34,00 PN40	ZEEN02A1F2	ZEEN02A4F2
DN25/33,70 PN40	ZEEN02A1F1	ZEEN02A4F1
DN32/ 34,00 - 38,00 Special Bore 40,00 PN40	ZEEN02A1G2	ZEEN02A4G2
DN32/42,40 PN40	ZEEN02A1G1	ZEEN02A4G1
DN40/ 48,30 PN40	ZEEN02A1H1	ZEEN02A4H1
DN40/ 40,00 - 44,50 Special Bore 48,00 PN40	ZEEN02A1H2	ZEEN02A4H2
DN50/ 52,00 - 56,00 Special Bore 58,00 PN16	ZCEN02A1I2	ZCEN02A4I2
DN50/ 60,30 PN16	ZCEN02A1I1	ZCEN02A4I1
DN65/ 70,00 Special Bore 73,00 (4 gaten) PN16	ZCEN02A1J2-4	ZCEN02A4J2-4
DN65/ 76,10 PN16 (4 gaten/4 trous/4 holes/4 Schraubenlöcher)	ZCEN02A1J1-4	ZCEN02A4J1-4
DN65/ 76,10 PN16 (8 gaten/8 trous/8 holes/8 Schraubenlöcher)	ZCEN02A1J1	ZCEN02A4J1
DN80/ 83,00 - 85,00 Special Bore 90,00 PN16	ZCEN02A1K2	ZCEN02A4K2
DN100/ 101,6 - 106,00 Special Bore 110,00 PN16	ZCEN02A1L2	ZCEN02A4L2
DN100/ 114,30 PN16	ZCEN02A1L1	ZCEN02A4L1
DN125/ 139,70 PN16	ZCEN02A1M1	ZCEN02A4M1
DN125/ 129,00 - 131,00 Special Bore 135,00 PN16	ZCEN02A1M2	ZCEN02A4M2
DN150/ 154,00 - 156,00 Special Bore 160,00 PN16	ZCEN02A1N1	ZCEN02A4N1
DN150/ 168,30 PN16	ZCEN02A1N1	ZCEN02A4N1
DN200/ 204,00 Special Bore 208,00 mm (-0/+0,6) PN16	ZCEN02A1P2	ZBEN02A4P2
DN200/ 204,00 Special bore 208,00 mm (-0/+0,6) PN10 (8 gaten/8 trous/8 holes/8 Schraubenlöcher)	ZCEN02A1P2	ZCEN02A4P2
DN250/ 254,00 Special Bore 262,00 mm PN10	ZBEN02A1Q2	ZBEN02A4Q2
DN200/219,10 PN16	ZCEN02A1P1	ZCEN02A4P1
DN200/ 219,10 PN10 (8 gaten/8 trous/8 holes/8 Schraubenlöcher)	ZBEN02A1P1	ZBEN02A4P1
DN300/ 304,00 mm PN10	ZBEN02A1R4	ZBEN02A4R4
DN300/ 323,00 mm PN10	ZBEN02A1R2	ZBEN02A4R2



AFMETING DIMENSION DIMENSION ABMESSUNG	304L	316L
DN10/17,20 PN40	ZEEN11B1C1	ZEEN11B4C1
DN15/21,30 PN40	ZEEN11B1D1	ZEEN11B4D1
DN20/26,90 PN40	ZEEN11B1E1	ZEEN11B4E1
DN25/29,00 Special Bore PN40	ZEEN11B1F4	ZEEN11B4F4
DN25/33,70 PN40	ZEEN11B1F1	ZEEN11B4F1
DN32/42,40 PN40	ZEEN11B1G1	ZEEN11B4G1
DN40/48,30 PN40	ZEEN11B1H1	ZEEN11B4H1
DN50/60,30 PN16	ZCEN11B1I1	ZCEN11B4I1
DN50/60,30 PN40	ZEEN11B1I1	ZEEN11B4I1
DN65/76,10 PN40	ZEEN11B1J1	ZEEN11B4J1
DN65/76,10 PN16 (4 gaten/4 trous/4 holes/4 Schraubenlöcher)	ZCEN11B1J1-4	ZCEN11B4J1-4
DN65/76,10 PN16 (8 gaten/8 trous/8 holes/8 Schraubenlöcher)	ZCEN11B1J1	ZCEN11B4J1
DN65/76,10 PN40	ZEEN11B1J1	ZEEN11B4J1
DN80/88,90 PN16	ZCEN11B1K1	ZCEN11B4K1
DN80/88,90 PN40	ZEEN11B1K1	ZEEN11B4K1
DN100/114,30 PN16	ZCEN11B1L1	ZCEN11B4L1
DN100/114,30 PN40	ZEEN11B1L1	ZEEN11B4L1
DN125/139,70 PN16	ZCEN11B1M1	ZCEN11B4M1
DN150/168,30 PN16	ZCEN11B1N1	ZCEN11B4N1
DN150/168,30 PN40	ZEEN11B1N1	ZEEN11B4N1
DN200/219,10 (8 gaten/8 trous/8 holes/8 Schraubenlöcher)	ZBEN11B1P1	ZBEN11B4P1
DN200/219,10 PN16	ZCEN11B1P1	ZCEN11B4P1
DN300/323,90 PN40	ZEEN11B1R1	ZEEN11B4R1



AFMETING DIMENSION DIMENSION ABMESSUNG	304L	316L
DN10 / 12,00 Special Bore 12,20 PN40	ZEEN01A1C3	ZEEN01A4C3
DN10 / 17,20 PN40	ZEEN01A1C1	ZEEN01A4C1
DN15 / 18,00 Special Bore 18,20 PN40	ZEEN01A1D3	ZEEN01A4D3
DN15 / 19,00 Special Bore 19,20 PN40	ZEEN01A1D4	ZEEN01A4D4
DN15 / 21,30 PN40	ZEEN01A1D1	ZEEN01A4D1
DN20 / 22,00 Special Bore 22,20 PN40	ZEEN01A1E3	ZEEN01A4E3
DN20 / 23,00 Special Bore 23,20 PN40	ZEEN01A1E4	ZEEN01A4E4
DN20 / 26,90 PN40	ZEEN01A1E1	ZEEN01A4E1
DN25 / 28,00 Special Bore 28,30 mm PN40	ZEEN01A1F3	ZEEN01A4F3
DN25 / 29,00 Special Bore 29,30 PN40	ZEEN01A1F4	ZEEN01A4F4
DN25 / 33,70 PN40	ZEEN01A1F1	ZEEN01A4F1
DN32 / 34,00 Special Bore 34,30 PN40	ZEEN01A1G3	ZEEN01A4G3
DN32 / 35,00 Special Bore 35,30 PN40	ZEEN01A1G4	ZEEN01A4G4
DN32 / 42,40 PN40	ZEEN01A1G1	ZEEN01A4G1
DN40 / 40,00 Special Bore 40,30 PN40	ZEEN01A1H3	ZEEN01A4H3
DN40 / 41,00 Special Bore 41,30 PN40	ZEEN01A1H4	ZEEN01A4H4
DN40 / 48,30 PN40	ZEEN01A1H1	ZEEN01A4H1
DN50 / 52,00 Special Bore 52,30 PN16	ZCEN01A1I3	ZCEN01A4I3
DN50 / 53,00 Special Bore 53,30 PN16	ZCEN01A1I4	ZCEN01A4I4
DN50 / 60,30 PN16	ZCEN01A1I1	ZCEN01A4I1
DN50 / 60,30 PN40	ZEEN01A1I1	ZEEN01A4I1
DN65 / 70,00 Special Bore 70,40 (4 gaten/4 trous/4 holes/4 Schraubenlöcher) PN16	ZCEN01A1J4-4	ZCEN01A4J4-4
DN65 / 70,00 Special Bore 70,40 (8 gaten/8 trous/8 holes/8 Schraubenlöcher) PN16	ZCEN01A1J4	ZCEN01A4J4
DN65 / 76,10 (4 gaten/4 trous/4 holes/4 Schraubenlöcher) PN16	ZCEN01A1J1-4	ZCEN01A4J1-4
DN65 / 76,10 (8 Gaten) PN16	ZCEN01A1J1	ZCEN01A4J1
DN80 / 85,00 Special Bore 85,40 PN16	ZCEN01A1K4	ZCEN01A4K4
DN80 / 88,90 PN16	ZCEN01A1K1	ZCEN01A4K1
DN100 / 101,60 Special Bore 103,30 PN16	ZCEN01A1L4-2	ZCEN01A4L4-2
DN100 / 104,00 Special Bore 104,80 PN16	ZCEN01A1L4	ZCEN01A4L4
DN100 / 114,30 PN16	ZCEN01A1L1	ZCEN01A4L1
DN100 / 114,30 PN40	ZEEN01A1L1	ZEEN01A4L1
DN125 / 129,00 Special Bore 130,00 PN16	ZCEN01A1M4	ZCEN01A4M4
DN125 / 139,70 PN16	ZCEN01A1M1	ZCEN01A4M1
DN150 / 154,00 Special Bore 155,20mm (-0/+0,4) PN16	ZCEN01A1N4	ZCEN01A4N4
DN150 / 168,30 PN16	ZCEN01A1N1	ZCEN01A4N1

AFMETING DIMENSION DIMENSION ABMESSUNG	304L	316L
DN200 / 204,00 Special Bore 205.60 PN10 (8 gaten/8 trous/8 holes/8 Schraubenlöche)	ZBEN01A1P4	ZBEN01A4P4
DN200 / 204,00 Special Bore 205.60 PN16	ZCEN01A1P4	ZCEN01A4P4
DN200 / 219,1 Standard Bore PN10 (8 gaten/8 trous/8 holes/8 Schraubenlöcher)	ZBEN01A1P1	ZBEN01A4P1
DN200 / 219,10 PN16	ZCEN01A1P1	ZCEN01A4P1
DN250 / 254,00 PN10	ZBEN01A1Q2	ZBEN01A4Q2
DN250 / 273,00 PN10	ZBEN01A1Q1	ZBEN01A4Q1
DN300 / 304,00 PN10	ZBEN01A1R4	ZBEN01A4R4
DN300 / 323,9 PN10 (12 gaten/12 trous/12 holes/12 Schraubenlöcher)	ZBEN01A1R1	ZBEN01A4R1
DN300 / 323,9 PN16	ZCEN01A1R1	ZCEN01A4R1
DN350 / 355,60 PN16	ZCEN01A1S1	ZCEN01A4S1
DN400 / 406,40 PN16	ZCEN01A1T1	ZCEN01A4T1
DN450 / 457,2 PN10 (20 gaten/20 trous/20 holes/20 Schraubenlöcher)	ZBEN01A1U1	ZBEN01A4U1



TYPE A

DIN / METRISCH
 DIN / METRIQUE
 DIN / METRIC
 DIN / METRIK

TYPE C

ISO / SCHEDULE
 ISO / SCHEDULE
 ISO / SCHEDULE
 ISO / SCHEDULE

AFMETING DIMENSION DIMENSION ABMESSUNG		TYPE
NW 10 /17,2 DIN 2642 F ND 10 ALU	ZBDI2642FAC1	Type C
NW 10 DIN 2642 F ND 10 ALU	ZBDI2642FAC4	Type A
NW 15 /21,3 DIN 2642 F ND 10 ALU	ZBDI2642FAD1	Type C
NW 15 DIN 2642 F ND 10 ALU	ZBDI2642FAD4	Type A
NW 20 /26,9 DIN 2642 F ND 10 ALU	ZBDI2642FAE1	Type C
NW 20 DIN 2642 F ND 10 ALU	ZBDI2642FAE4	Type A
NW 25 /33,7DIN 2642 F ND 10 ALU	ZBDI2642FAF1	Type C
NW 25 DIN 2642 F ND 10 ALU	ZBDI2642FAF4	Type A
NW 32 /42,4 DIN 2642 F ND 10 ALU	ZBDI2642FAG1	Type C
NW 40 /48,3 DIN 2642 F ND 10 ALU	ZBDI2642FAH1	Type C
NW 40 DIN 2642 F ND 10 ALU	ZBDI2642FAH4	Type A
NW 50 /60,3 DIN 2642 F ND 10 ALU	ZBDI2642FAI1	Type C
NW 50 DIN 2642 F ND 10 ALU	ZBDI2642FAI4	Type A
NW 65 /76,1 DIN 2642 F ND 10 ALU	ZBDI2642FAJ1	Type C
NW 65 DIN 2642 F ND 10 ALU	ZBDI2642FAJ4	Type A
NW 80 /88,9 DIN 2642 F ND 10 ALU	ZBDI2642FAK1	Type C
NW 80 DIN 2642 F ND 10 ALU	ZBDI2642FAK4	Type A
NW 100/ 114,3 DIN 2642 F ND 10 ALU	ZBDI2642FAL1	Type C
NW 100 DIN 2642 F ND 10 ALU	ZBDI2642FAL4	Type A
NW 125/ 139,7 DIN 2642 F ND 10 ALU	ZBDI2642FAM1	Type C
NW 125 DIN 2642 F ND 10 ALU	ZBDI2642FAM4	Type A
NW 150/ 168,3 DIN 2642 F ND 10 ALU	ZBDI2642FAN1	Type C
NW 150 DIN 2642 F ND 10 ALU	ZBDI2642FAN4	Type A
NW 200/ 219,1 DIN 2642 F ND 10 ALU	ZBDI2642FAP1	Type C
NW 200 DIN 2642 F ND 10 ALU	ZBDI2642FAP4	Type A
NW 250/ 273,0 DIN 2642 F ND 10 ALU	ZBDI2642FAQ1	Type C
NW 250 DIN 2642 F ND 10 ALU	ZBDI2642FAQ4	Type A
NW 300/ 323,9 DIN 2642 F ND 10 ALU	ZBDI2642FAR1	Type C
NW 300 DIN 2642 F ND 10 ALU	ZBDI2642FAR4	Type A
NW 350 DIN 2642 F ND 10 ALU	ZBDI2642FAS1	Type A + C
NW 400 DIN 2642 F ND 10 ALU	ZBDI2642FAT1	Type A + C
NW 450 DIN 2642 F ND 10 ALU	ZBDI2642FAV1	Type A + C
NW 500 DIN 2642 F ND 10 ALU	ZBDI2642FAW1	Type A + C

Dichting voor flens
Joint pour bride
Gasket for flange
Dichtung für flansch



AFMETING DIMENSION DIMENSION ABMESSUNG	TESNIT-BA-U Universele plaatpakking TESNIT-BA-U Joint de plaque universel TESNIT-BA-U Universal plate gasket TESNIT-BA-U Universal Dichtung	Voedingsdichting EPDM Joint alimentaire EPDM Food grade gaskets EPDM Dichtung für Lebensmittel EPDM	Stoomdichting 98% grafiet Joint vapeur 98% graphite Steam gasket 98% graphite Dampfdichtung 98% Graphit
1/2" - DN 15	NK00000801	NE00000801	NKSTOOM001
3/4" - DN 20	NK00000802	NE00000802	NKSTOOM002
1" - DN 25	NK00000803	NE00000803	NKSTOOM003
1 1/4" - DN 32	NK00000804	NE00000804	NKSTOOM004
1 1/2" - DN 40	NK00000805	NE00000805	NKSTOOM005
2" - DN 50	NK00000806	NE00000806	NKSTOOM006
2 1/2" - DN 65	NK00000807	NE00000807	NKSTOOM007
3" - DN 80	NK00000809	NE00000809	NKSTOOM009
4" - DN 100	NK00000811	NE00000811	NKSTOOM011
5" - DN 125	NK00000812	NE00000812	NKSTOOM012
6" - DN 150	NK00000813	NE00000813	NKSTOOM013
8" - DN 200	NK00000814	NE00000814	NKSTOOM014
10" - DN 250	NK00000815	NE00000815	NKSTOOM015
12" - DN 300	NK00000817	NE00000816	NKSTOOM017



Gillain & Co
HYGIENIC EQUIPMENT FOR FOOD & LIFE SCIENCES



Gillain & Co nv
Boomsesteenweg 85
BE-2630 Aartselaar
T +32 3 870 60 80
F +32 3 870 60 89
advice@gillain.com
www.gillain.com

© Gillain & Co

V20211027

