

## TECHNICAL SPECIFICATIONS

- 316L / 1.4404
- DIN 11864 parts 1 & 2
- Dimensions A (EN10357 A / DIN11850 R2) and C (EN10357 D / ASME BPE)
- Hygiene class H3  
Ra < 0,8 / 0,8 µm,  
internal and external
- Orbital welding
- Form A with O-ring standard EPDM (silicone, Viton® in stock)
- O-rings FDA / EC 1935 - 2004 approved
- No dead spots or spaces
- 3.1 certificate / certificate of conformity for O-ring
- Hygienic packaging with end caps / sealed plastic bag

## INOXCO aseptic couplings according to DIN11864

Couplings for the pharmaceutical and the food industry must meet very strict technical and qualitative requirements. INOXCO aseptic couplings according to DIN 11864 have a **very high quality finish, no dead spots or areas, and are very easy to clean.**

- INOXCO aseptic couplings according to DIN 11864 are specially developed for **aseptical, chemical and pharmaceutical applications.**
- Available in 2 versions:  
**DIN11864-1: aseptic screw coupling**  
**DIN11864-2: aseptic flange coupling**
- Dimensions A (EN10357 A / DIN 11850 R2) and C (EN 10357 D / ASME BPE)
- INOXCO aseptic couplings DIN 11864 are identical to the "standard" couplings, but with a recess for an O-ring.

### ASEPTIC SCREW COUPLING



### ASEPTIC FLANGE COUPLING



## Contact us

+32 3 870 60 80

+32 3 870 60 89

advice@gillain.com

[www.gillain.com](http://www.gillain.com)



**Gillain & Co**  
HYGIENIC EQUIPMENT FOR FOOD & LIFE SCIENCES

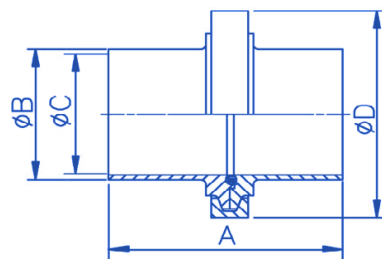
part of  
**heleon**  
group

# INOXCO aseptic couplings according to DIN11864



## Aseptic screw coupling DIN 11864-1 FORM A - Range A

DN	C	B	D	A	O-ring (B)	Order n°
25	26	29	63	77	28,0 × 3,5	N900216003K
32	32	35	70	88	34,0 × 5,0	N900216004K
40	38	41	78	88	40,0 × 5,0	N900216005K
50	50	53	92	89	52,0 × 5,0	N900216006K
65	66	70	112	113	68,0 × 5,0	N900216007K
80	81	85	127	117	83,0 × 5,0	N900216009K
100	100	104	148	120	102,0 × 5,0	N900216011K



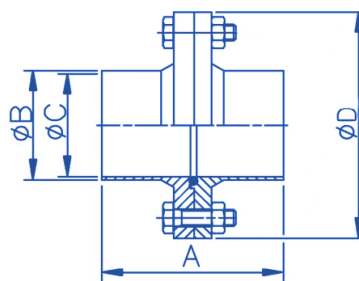
## Aseptic screw coupling DIN 11864-1 FORM A - Range C

INCH	C	B	D	A	O-ring (B)	Order n°
1"	22,1	25,4	63	77	24,0 × 3,5	N900216803K
1-1/2"	34,8	38,1	78	88	37,0 × 5	N900216805K
2"	47,5	50,8	92	89	50,0 × 5	N900216806K
2-1/2"	60,2	63,5	112	115	62,0 × 5	N900216807K
3"	72,9	76,2	127	117	75,0 × 3,5	N900216809K
4"	97,38	101,6	148	119	100,0 × 5	N900216811K



## Aseptic flange coupling DIN 11864-2 FORM A - Range A

DN	C	B	D	A	O-ring (B)	Order n°
25	26	29	70	80	28,0 × 3,5	N900249003K
32	32	35	76	90	34,0 × 5,0	N900249004K
40	38	41	82	90	40,0 × 5,0	N900249005K
50	50	53	94	90	52,0 × 5,0	N900249006K
65	66	70	113	108	68,0 × 5,0	N900249007K
80	81	85	133	116	83,0 × 5,0	N900249009K
100	100	104	159	116	102,0 × 5,0	N900249011K



## Aseptic flange coupling DIN 11864-2 FORM A - Range C

INCH	C	B	D	A	O-ring (B)	Order n°
1"	22,1	25,4	66	80	24,0 × 3,5	N900249803K
1-1/2"	34,8	38,1	79	90	37,0 × 5,0	N900249805K
2"	47,5	50,8	92	90	50,0 × 5,0	N900249806K
2-1/2"	60,2	63,5	107	108	62,0 × 5,0	N900249807K
3"	72,9	76,2	125	112	75,0 × 5,0	N900249809K
4"	97,38	101,6	157	116	100,0 × 5,0	N900249811K



### Contact us

+32 3 870 60 80

+32 3 870 60 89

advice@gillain.com

[www.gillain.com](http://www.gillain.com)

Also ask about our  
**INOXCO EHEDG TRIPLE 0,8**  
tubes and fittings

